

### HVPC 2 Poles Connector (90° )

High voltage, high current, 25/35/50/70mm<sup>2</sup> wire, metal shielded, HVIL

#### Part-No:

##### → Plug:

HVPC2P1800FVX25  
(25 mm<sup>2</sup>  $\varnothing$  11.6~12.2mm)  
HVPC2P1800FVX35  
(35 mm<sup>2</sup>  $\varnothing$  13.8~14.4mm)  
HVPC2P1800FVX50  
(50mm<sup>2</sup>  $\varnothing$  15.2~15.8mm)  
HVPC2P1800FVX70  
(70mm<sup>2</sup>  $\varnothing$  17.4~18.2mm)  
"X" indicates 1/2/3/4 (Code A/B/C/D)

##### → Socket:

HVPC2P1800MVX0X  
HVPC2P1800MVWPX0X  
"X" indicates 1/2/3/4 (Code A/B/C/D)  
"0X" indicates: Busbar Type  
"WP" indicates: self-waterproof

#### Mating design:

→ Locking assurance by CPA

#### Terminal System:

→ 2.5X15mm, Silver plated  
→ Wire size 25/35/50/70mm<sup>2</sup>, shielding  
→ HVIL contact system

#### Termination technology:

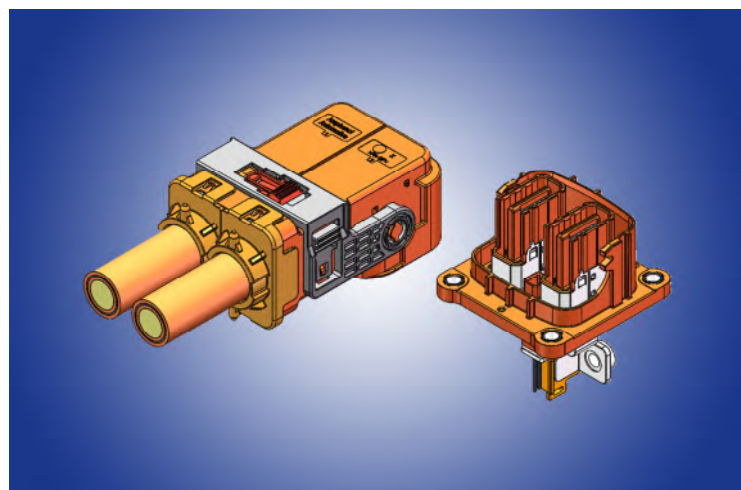
→ Ultrasonic welding for power terminal  
→ Crimping for HVIL terminal

#### General:

→ IP67,IP6K9K(Mated)  
→ IPXXB(unmated)  
→ HVIL  
→ 360° shielding

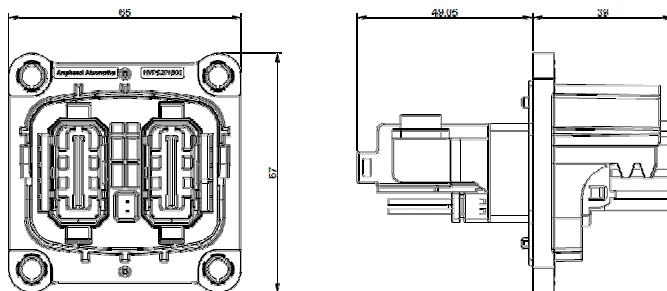
#### Performance characteristics:

→ Unmating force:  $\leq 100\text{N}$   
→ Temperature range:  $-40^{\circ}\text{C}$  to  $+140^{\circ}\text{C}$   
→ Rated Voltage: 1000V / DC  
→ Mating cycles:  $\geq 50\text{min}$   
→ Rated Current(@85°C):  
25mm<sup>2</sup>=130A  
35mm<sup>2</sup>=200A  
50mm<sup>2</sup>=250A  
70mm<sup>2</sup>=280A



#### Dimensional characteristics:

##### Socket:



##### Plug:

