

14孔低压防水连接器

低电压, 0.5mm²线缆, 信号连接器, 防水

产品型号:

→ 插头:

MPS02-BSFA0140 (Code A)

MPS02-BSFB0140 (Code B)

MPS02-BSFC0140 (Code C)

Cable Diameter: 1.55±0.15mm

→ 插座:

MPS02-BSMA0140 (Code A)

MPS02-BSMB0140 (Code B)

MPS02-BSMC0140 (Code C)

Cable Diameter: 1.55±0.15mm

对配设计:

→ CPA确认锁定结构;

→ 端子二次锁机构

端子规格:

→ 0.64X1.0mm, 镀锡

→ 适配线径规格: 0.5mm², 非屏蔽

端子连接工艺:

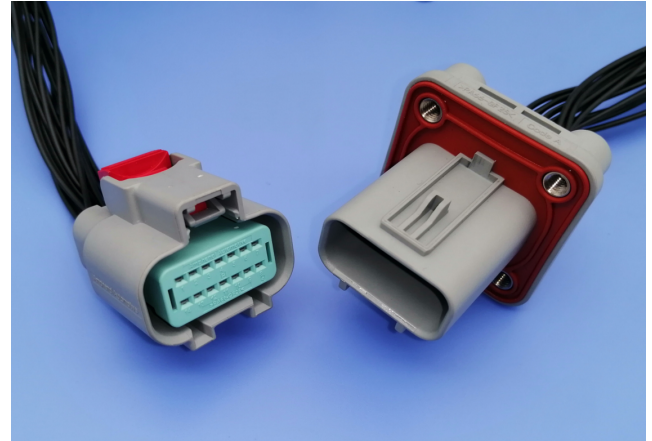
→ 端子压接处理

常规特性:

→ IP68, IP6K9K (配合状态)

→ IPXXB(未配合状态)

→ 防错code设计: A/B/C



Construction:

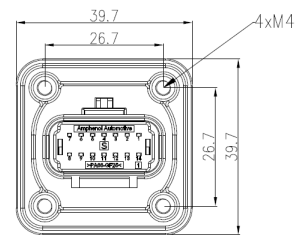
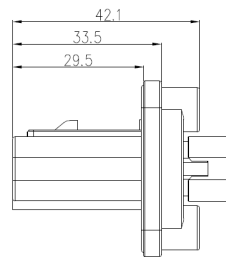
→ 塑胶壳体材料 : PA66-GF

→ 端子材料 : 铜合金, 镀锡

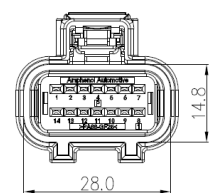
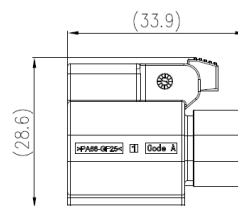
→ 防水圈: 硅橡胶

尺寸参数:

插座:



插头:



性能参数:

→ 配合次数: 最少50次

→ 使用温度区间 : -40° C to +125° C

→ 最大额定电压: 60V / DC

→ 最大工作电流 : 2A

→ 绝缘: 100MΩ

→ 耐压: 500V DC / 1min